



Summer 2023

Waterford Township

News & Notes

MEETING DATES:

Supervisors:

Flory Kondzielski, Chr.
Darren Smith
David Senger

1st Wednesday, 7 p.m.
3rd Wednesday, 7 p.m.

Planning Commission:

4th Thursday, 6 p.m.

Water/Sewer Authority:

2nd Thursday, 7 p.m.

Zoning Administrator:

Lindsay Ethridge

814/796-3413

M,T,W,F

9 AM to 3:30 PM

Thursday

4—7 PM

zoning.wtfdtwp@icloud.com

Tax Collector:

Melissa Oberlander

814/796-1500

12723 Rt 19S, Ste A

Waterford, PA 16441

waterfordwptax@gmail.com

Roadmaster: Jerry Hanas

Secretary/Treasurer:

Sharon Risjan

12451 Circuit Street, Waterford, PA 16441 814/796-2109 FAX: 814/796-6915

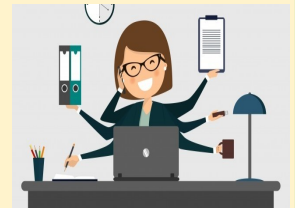
Office Hours: Monday through Friday 7:30 a.m. to 2:30 p.m.

E-mail: wtfdtwp@verizon.net WEB: waterfordtownship.net

Hello everyone!

I hope you are all enjoying a fantastic summer! It certainly doesn't seem like we should be into August already! Our Township has been a busy place, with lots of things going on. Our Zoning Officer has had a lot going on and you can see her articles in this newsletter. Roadmaster Jerry Hanas and his crew have been really busy, too, getting the roads upgraded and tar and chipped!

Your Township Secretary, Sharon Risjan



Inside this issue

Meeting Dates	1
Stancliff Hose	2
Supervisors	3
Tax Collector	3
Kiwanis.....	3
Food Pantry	3
Roadmaster	4
Planning Commission ..	5
Parks & Rec.....	6
Zoning	7
W.E.C.A.N.....	8
National Fuel Safety....	9
Hazardous Waste.....	10
Grant Programs	11



Hello everyone,

As of August 10, Stancliff Hose Company has responded to 494 calls for help covering EMS, Fire, Car Crashes, Mutual Aid and other miscellaneous calls for assistance. At this rate, we will answer 800 responses by the end of the year, or about 2 every day. On July 22 we responded to 10 calls.

Several public supported fund raisers occur each year to help raise money to pay the bills. The Chicken BBQ and Waterford Heritage Days was well supported and helped by perfect weather. Upcoming events include Bingo at the Waterford Fair, Golf Scramble at Mound Grove on September 16th (see Facebook for info) and the Reverse Raffle on October 18th to complete the year.

Our Fund Drive is in progress and we thank those who have donated (20.5%) so far. We ask those who have not donated to consider doing so. A reminder letter will be mailed out soon to the 79.5% who have not.

We recently received two new MSA self-contained breathing apparatus. The new units provide air for 45 minutes of use and have built in Thermal Imaging Cameras to help “see” in smoke filled buildings. The purchase of these air packs was made possible by the financial support (\$24,000) of the Waterford Township Supervisors.

In the next few weeks, you will see the sidewalks and steps being replaced at the offices of Rep Jake Banta at 412 High Street. That project will be paid for, in part, by a grant obtained by the Waterford Borough Council.

Much work remains to be done by the end of the year. We thank all who recognize the value of volunteer fire departments.

Ron Jagta, President
John Orr, Chief

Greetings from the desk of Supervisor Flory Kondzielski . . .

We hope you are all enjoying the Summer months! Your Township employees are hard at work striving to maintain your roadways and keeping them safe. Please report any missing STOP signs if you notice one missing. Your Township is financially sound and we are working very hard to obtain any grants available for Township projects to help make your Township dollars go farther. Remember small problems can become large problems, so PLEASE don't hesitate to call the Township at 814/796-2109 for any concerns or problems that may arise which involve your Township.

From Our Tax Collector, Melissa Oberlander . . .

Everyone should have received their 2023 School tax bills. If you have not, please contact the office asap. Waterford Township and the Fort LeBoeuf school district have a \$10 Per Capita for every individual living in the Township/School District. If you are 18-65 years of age, and live in Waterford Township, please contact the tax collector's office if you don't receive a bill for this, or if you move out of the Municipality. The Tax Collector's office is located at 12723

Route 19 S, Phone 814-796-1500 and email waterfordtwptax@gmail.com.

I hope everyone enjoys the rest of your summer!!!

Office Hours: Tuesday & Thursday 10 a.m.—2 p.m.
Wednesday 2 p.m.—6 p.m.
March through December

NO OFFICE HOURS IN JANUARY AND FEBRUARY



Kiwanis
CLUB OF FORT LeBOEUF

We hope you enjoyed our annual Pancake Breakfast on Saturday, July 22, at Waterford Elementary School. This event was the same weekend as Waterford Heritage Days.

In June, we held our largest Bike Rodeo to date. We made 19 kids very happy when they won new bikes! Children were able to learn about all kinds of safety including bicycle, gun, water, fire, medicine, and hazardous materials. They also learned about nutrition and dental health. Thank you to the Pennsylvania Kiwanis Foundation for their grant, and to many other agencies for participating.

We hosted our first outdoor Family Movie Night on Saturday, August 5, at the Fort LeBoeuf High School Football field. Look for upcoming details on our Facebook page —

“Kiwanis Club of Fort LeBoeuf”.

Waterford Community Food Pantry . . .

If you know of anyone experiencing food insecurity, help is available. The Waterford Community Food Pantry serves Waterford, LeBoeuf and Mill Village areas. We are located at 140 W. 6th St, in Waterford. We are open 4 days per month, and clients may visit once. To sign up, simply visit when we are open, and bring a driver's license. Then, if you meet income eligibility, you can sign up on the spot. The best way to see our hours is to visit our Facebook page *“Waterford Community Food Pantry”*. We offer two different programs; one is for any age and the other is for people 60+. Many senior will qualify for both programs.

If you have a prolific garden this year, consider sharing fresh produce with your neighbors. Simply contact us via email at Waterfordcfp@gmail.com to make arrangements.

Roads And Bridges . . .

Jerry Hanas, Roadmaster

Welcome to another busy year!

We have added another 3.5 miles of tar & chip roads this year, including Klemmer Road from the Township line to Clute Road, Clute Road from Klemmer Road to the original tar and chip on Clute, Haugh Road from Old Wattsburg Road to the top of the hill, approximately .8 mile, and we completed Benson Road from the bridge to Donation Road. Cost: \$279,135. We also put another single coat of tar & chip on another 3.7 miles, including Eliason Road, Scott Road and Swailes Road. Cost: \$69,142. Total cost for tar & chip this year is \$348,277.

We have been adding gravel to Niemeyer Road, Sedgwick Road and Barton Road, preparing them to be tar & chipped next year. We have also been adding gravel to other roads that have had storm washouts or require additional base. For these projects, we contracted 15,000 tons of state approved 2A gravel at \$13.00 per ton for a total of \$195,000.

The covered bridge on Niemeyer Road over LeBoeuf Creek has been put out for bid to be renovated and re-built and the results ranged from \$3,473,689 to \$4,316,000. It will remain historical by replacing only broken or rotted parts along, with all new foundation and headwalls, with steel beams to set the bridge on. Start date is the Fall of 2023

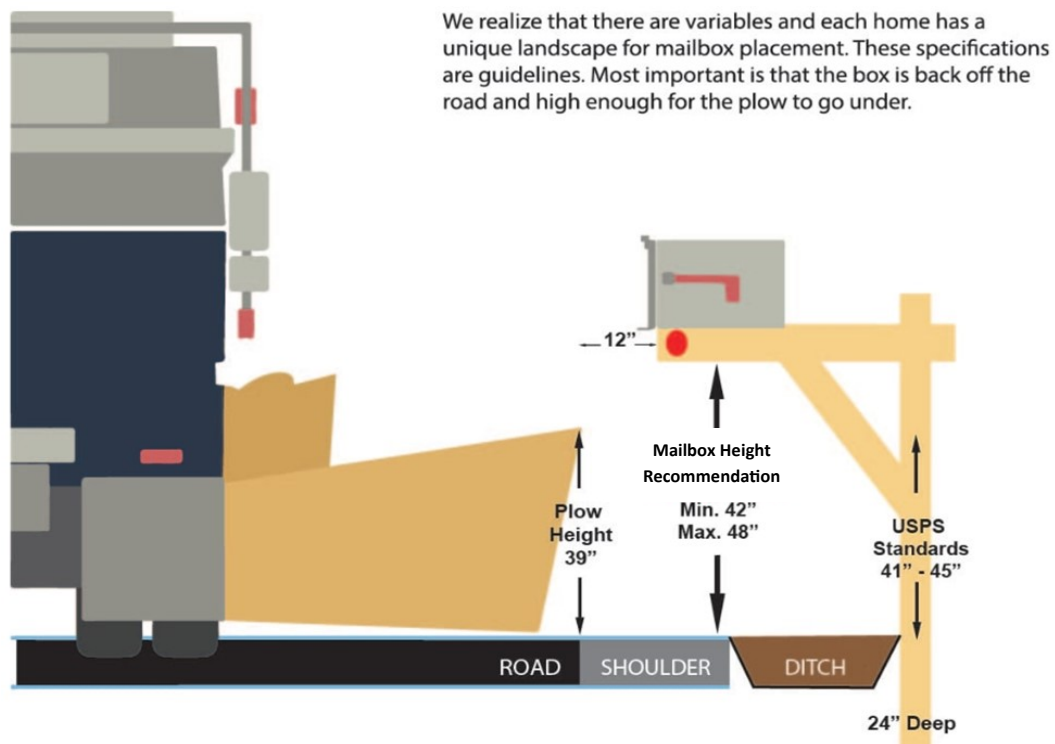
The culverts on Himrod Road over LeBoeuf Creek will be replaced with a two-lane concrete bridge to be let out for bid later this year with a start date of Summer 2024. All bridges are managed by PennDOT.

We did Full Depth Reclamation on Flatts Road from the bridge to Rt. 97, and added some gravel. We have completed paving that section, at a cost of \$36,611.76. We have also been mowing berms and ditches, filling potholes, grading, and various other maintenance projects.

Just a reminder that all access to Township roads requires a Driveway Permit. This includes new driveways and replacing or repairing culverts. Contact the Township office at (814)796-2109.

Please remember to drive defensively and cautiously as families are walking along the roads, as well as bicycles, horses, tractors, slow moving vehicles and road workers. Remember -The life you save – may be your own.

I've included a description of design and placement of your mailbox to minimize damage during winter snow plowing.



Waterford Township Planning Commission

Bill Phillips – Chairman

Ron Eliason – Vice Chairman

Kim Risjan – Secretary

Doug Brace – Board member

Matt Erickson – Board member

Lindsay Ethridge – Alternate



***Planning Commission meetings are now being held
the 4th Thursday of every month at 6:00pm***

*We are currently looking for 1 or 2 alternate members who would be willing to become a regular member, as needed. Please contact Lindsay at 814-796-3413 if you would like to join, or want more information.

Subdivision Process:

- Attend a planning commission meeting with your idea and preliminary sketch of your plans for review for compliance
- Hire a surveyor to create your maps
- Stop back at a planning meeting to have your drawings officially approved and signed
- Take plan to Erie County Planning for review and approval – Pete Link's office
- Bring plan back to Waterford Township for supervisor review and approval
- Take finalized plans to be recorded at the Erie County Courthouse
- Return proof of recording and 1 copy for the Township records. Once received, we will refund the \$100.00 deposit fee

Subdivision fees:

- Minor (5 lots or less) – \$100.00 + \$10.00 per lot
- Major (6 lots or more) - \$600.00 + \$25.00 per lot
- Line Revision - \$50.00

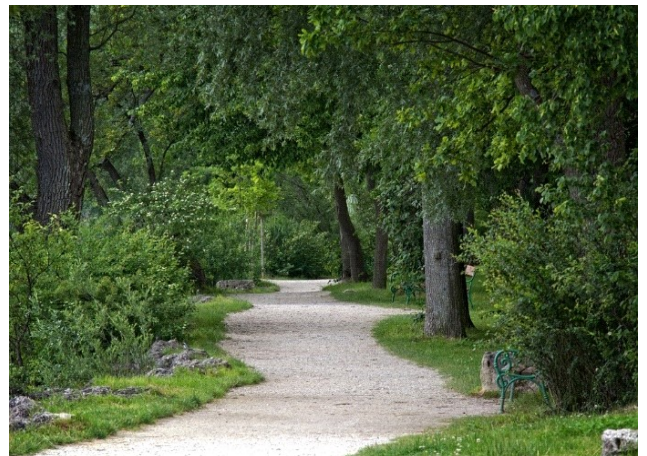


*All subdivisions also require a \$100.00 deposit to be refunded once recorded documents are returned to the office.



Parks and Recreation

Yes, you read that right! Waterford Township is working to adopt an ordinance to form a parks and recreation committee. This is a first for Waterford Township and we realize this is something we as a community are lacking. If you would like to volunteer to be on this committee, please contact Lindsay Ethridge at 814-796-3413. This committee will hold monthly meetings to begin the process of developing a community park for our residents. We are hoping to incorporate rental pavilions, walking nature trails, pickle ball courts, basketball courts, a playground, and more. This committee will also lead fundraising events and assist with acquiring grants to make this dream a reality! Please don't hesitate to reach out with more questions or to be placed on this committee. Meeting days and times will be set in our first monthly meeting once the ordinance is adopted.



ZONING UPDATES

I wanted to take a moment to remind residents that before they begin to build, all new structures need a zoning permit. This includes but is not limited to shed's, decks, detached garages, accessory use solar panels, pools, fences, dwelling additions, and new homes. Failure to secure permits before starting construction will result in a \$50.00 penalty plus the permit fee. Some projects may also require a building permit. We are contracted with Construction Code Inspectors to inspect and issue building permits and occupancy certificates.

Their contact info is:
Construction Code Inspectors
Phone: 814-432-2630
Email: cci@constructioncodepa.com

Comprehensive Plan Update

Some of you have been asking about the comprehensive plan and when we will begin monthly meetings so I wanted to give everyone an update. We have stalled out a little to allow the borough to catch up with an introductory meeting and a survey period. We will now be doing this as a multi- municipal plan with Waterford Borough. As of now we are waiting on grants to finalize and contract with a consulting company to assist in the writing of the plan. We are hoping to begin meetings in the next couple of months as we finalize things. Any other questions feel free to give Lindsay a call.



Lindsay Ethridge, Zoning Officer
Office Hours:
Monday, Tuesday, Wednesday, Friday
9:00am – 3:30 pm
Thursday 4:00pm – 7:00pm
814-796-3413 call or text
Zoning.wtfdtwp@icloud.com



W.E.C.A.N. WATERFORD

Waterford Economic Community Action Network



W.E.C.A.N. was created to foster community spirit, drive economic growth, and bring like-minded people together to make small town living even better.

Every town needs people who care about its yesterday, today, and tomorrow. W.E.C.A.N is looking for more community minded volunteers to work on the following committees:

Art & Culture
Community Beautification
Parks and Recreation
Economic Development
Health & Wellness
Public Relations & Marketing

Current Projects Include:

Palettes of Waterford-Waterford Mural-Lake Assessment



SCAN HERE
TO REGISTER

Like us at [Facebook.com/wecanwaterford](https://www.facebook.com/wecanwaterford)

For more information, contact
Susan 814-528-4228 or Darlene 814-823-2116



National Fuel®

METER SAFETY - LANDSCAPING AWARENESS

NATURAL GAS SAFETY IS EVERYONE'S RESPONSIBILITY

Approximately 5% of potentially hazardous natural gas leaks are caused by damage to customer meters.

FOLLOW THESE IMPORTANT SAFETY TIPS WHEN WORKING AROUND NATURAL GAS METERS

- Maintain 2 feet of clearance when mowing or trimming around meters.
- Use hand tools to landscape within the 2 foot buffer zone.
- Do not hang or lean tools on or against meters.
- Use caution when trimming tree branches and shrubs near meters.
- Do not leave equipment parked in front of meters.
- Keep mulch or garden rocks at least 6 inches below the bottom of gas meters.
- Plant shrubbery away from gas meters to allow access in the event of an emergency.



Call 8-1-1
before you dig.

Any project. Any size.

Call 811 at least three business days before:

- Excavation of any kind.
- Planting or removing trees, flower beds or shrubs.
- Installing fences, drainage, mailboxes, etc.
- Grading or removing dirt from property.
- Anchoring supports for decks and swing sets.



**Smell Gas?
Leave Fast!**

If you suspect a gas leak:

- Turn off and abandon any motorized equipment.
- Evacuate to a safe distance of 330', or about the length of a football field.
- Once in a safe location, call National Fuel at 1-800-444-3130.
- If you believe an elevated response is required, call 911.

2023 Electronic Waste & Household Hazardous Waste COLLECTION DAYS



EVENT DATES & LOCATIONS:

Aug 19 @ 9333 Tate Rd, Erie, PA

Oct 21 @ 650 E. Smith St, Corry, PA

Nov 18 @ 9333 Tate Rd, Erie, PA

Open to all Erie County Residents

There is a fee of \$0.50 per pound

REGISTER AT:

nobleenviro.com/e-waste-and-hhw/



ACCEPTED HHW:

Antifreeze
Pesticides
Corrosives/Caustics
Chlorine Products
Flammable Liquids
Used Oil
Lead Acid Batteries
Rechargeable Batteries
Fluorescent Light Bulbs
Oil-based Paint & Latex Paint
Paint Products/Turpentine
Mercury-Containing Devices

ACCEPTED E-WASTE: UNACCEPTED ITEMS:

TVs & W Equipment
Air Conditioners
Microwaves
Mobile Phones & Tablets
Phones and Phone Equipment
Laptop & Desktop Computers
Mouse, Keyboard, Monitors
Modems
Hard Drives
Copiers/Fax Machines/Printers
Electric Typewriters
CD Players & Tape Players
Stereos, Speakers, Radios

Ammunition
Explosives
Radioactive material
Biological/medical
Smoke detectors
Tires

**Erie County
Recycling
Program**

[ErieRecycling.com](https://eriecountyclerycling.com)

Grant programs for residents

Waterford Township has adopted an ordinance allowing our residents to apply for, and benefit from, local grant opportunities for home repairs and updates. There are also opportunities to remedy lead paint issues in the home. Applications and more information can be picked up at the Township office during business hours, by mail, or email as requested.

All programs are run and sponsored by the Redevelopment Authority of the City of Erie.

Eliminating Lead Hazards Makes Sense

WHERE IS LEAD-BASED PAINT FOUND?

Although the government banned the use of lead-based paint in 1978, it can be found in many older homes to this day. Lead is commonly found in:

- Homes in the city, country or suburbs
- Apartments, single-family homes, and both private and public housing
- Interior and exterior of homes
- Soil around the home, which can pick up lead from exterior paint or other sources

CHECKING YOUR HOME FOR LEAD

RACE checks homes for lead paint by performing a combination Paint Inspection/Risk Assessment to determine whether the home has lead-based paint hazards.

Lead from paint, dust and soil can be dangerous if not managed properly.

- Lead exposure can harm babies even before they are born.
- Even children who seem healthy can have high levels of lead in their bodies.
- People can get lead in their bodies by breathing lead dust, or eating soil or paint chips containing lead.
- Removing lead-based paint improperly can increase the danger to your family.

BE AWARE OF THE DANGERS OF LEAD

Lead poisoning can cause permanent brain damage, and kids 0-5 are at high risk. Lead poisoning can lead to problems with learning, behavior, hearing, speech, and motor skills, and exposure to lead is a risk factor for criminal behavior later on.

Erie County:

- Is the 10th-highest county in Pennsylvania for childhood lead poisonings annually.
- Has lead poisonings at a rate of over 1.5 times higher than Flint, Michigan.
- 3 times more black children and 1.5 times more Hispanic children poisoned than white children.

Income Guidelines

1 Person	< \$44,450
2 Person	< \$50,800
3 Person	< \$57,150
4 Person	< \$63,500
5 Person	< \$68,600
6 Person	< \$73,700
7 Person	< \$78,750
8 Person	< \$83,850

Income Guidelines are subject to yearly changes. RACE will require documentation from all adult occupants to verify that the household is within the Income guidelines.

HOW TO QUALIFY

- All units must house a child age 0-5, a pregnant woman, or have a child age 0-5 that spends a significant amount of time in the property.
- All homes must be located in Erie County.
- All applicants must follow the income guidelines provided above.
- The housing unit must not be in mortgage- or tax- foreclosed proceedings.
- The home must be structurally sound.
- The home must have been built prior to 1978.



Renew. Rebuild. Revitalize.

626 State Street · Suite 107
Erie, PA 16501-1128
redeveloperie.org

In need of major home repairs?

-Roofs
-Windows
-Electrical
-Plumbing
-Heating

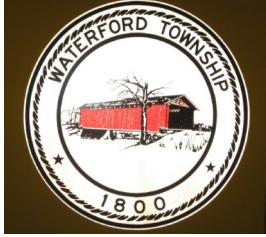
WE MAY HAVE PROGRAMS TO HELP!

CONTACT US AT

814.870.1540

-OR-

INTAKE@REDEVELOPERIE.ORG



Waterford Township
12451 Circuit St
Waterford, PA 16441

